



My Fellow Woodcarvers,

I hope you can join other members of the club for another club meeting on *Zoom*. There are more members in attendance each month; and more to talk about each time we meet.

Be there. And bring what you've been working on to the camera.

Be well . . . Mike Schulde

Calendar:

CWCA February Club ZOOM Meeting 2/7/21 10:00 a.m. Click this link to get in:

<https://zoom.us/j/94270826566?pwd=Wm9lUnhKS2o3dEdudG1DTDRUVVROQT09>

Mystic Woodcarving Retreat - Ender's Island Mystic CT – August 27 – 30, 2021.

New England Wood Carvers's - October 2021. Details to follow.

Currently Serving CWCA Officers:

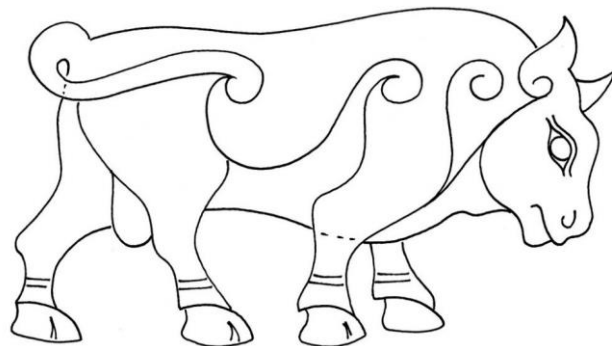
President	Leo Hein	860-675-5473	Secretary	Dan Holiday	860-620-2255
V. President	Michael Audette	860-388-7874	Treasurer	Bob McVety	203-288-3161
Membership	Mark Austin	860-283-2177			
Newsletter	Mike Schulde	860-379-5805	mikeschu62@gmail.com		

TIME TO 'RE-UP'! Please send \$15.00 to Mark Austin to renew your membership For 2021. checks should be made to CWCA and mailed with following form to: **CWCA Membership, 258 Campville Road, Northfield, CT 06778**

Name _____ New Member? ☐ Yes

Address _____

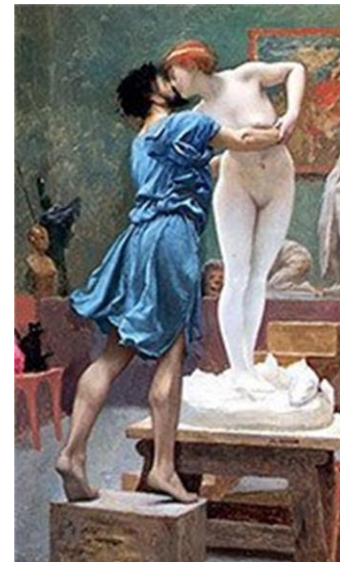
Phone _____ Email _____



Drawing to Carve

Not that long ago, drawing lessons were part of woodcarving education and training. Developing that ability helped provide insight into the form and proportion of a design. Sadly that has gone away for the most part. And for those of us who were taught to carve informally, or self-taught – well we've been on our own, relying on innate ability to sketch or otherwise divine a way to get from fuzzy idea to finished wood article. Let's take a look at some of the methods that can help you take an inspiration to reality with less perspiration.

- You can make a clay model of what you want to carve. Or find a three dimensional model that is reasonably close.
- Most carvers make a paper sketch / line drawing. From here, you can:
 - Trace it onto the wood using graphite paper, or glue it onto the wood and carve it away.
 - You can trace or glue, and then rough the piece out on a band saw.
- Guidelines can be drawn on the piece; or holes can be drilled in key positions through the wood to serve as a reference as you carve away the wood that is hiding your creation within.
- Reference templates that can be fastened to a block for sawing or drilling; and can provide you with the ability to improve on a design and carve repeat pieces.
- There are also publications that supply patterns and sketches for use as they are, or as a starting point for you to make a similar design.
- When drawing without talent (my predicament, for sure), I even find it challenging to take a drawing that I want to follow and scale up or down in size. Assistance here can come from a variety of mechanical, optical, and electronic devices.



- My personal favorite approach is to line up pictures that I took my original inspiration from, and check them frequently as I slowly chip away. It helps if the pictures are from different perspectives; and it doesn't seem to matter if they are on a different scale. The process is slow and laborious – especially if you are having to change or remove glasses each time you reference the pictures. But in the end, I feel as if I have truly gained something as I go from two to three dimensions. And I definitely develop a connection to the piece. Warning – that connection can mean that you need to work harder to give that piece away! You'll want to be sure it goes to a good home.



Message From The Prez

Greetings....Christmas Day came and went and then into January!!
For most of us, the weather was mostly the wind and rain, and was just that, wind and rain. But walking up the driveway to get the paper that starts my morning routine, and throwing branches out of the path, I get to the maple tree that was laying across the way. Now I have serious work. The tree is one foot in diameter and 50 feet long. By the afternoon, soaked to the bone, the driveway was clear, at which point I took a long look around this forest in a state of decline. Where once the neighbor's house was not visible, now I can see five homes.

Trees and vegetation are a main source of oxygen.
Trees are a main source of wood for carving, but without oxygen we won't be carving soooooo... Plant A Tree.....so we can be.....Happy Carvers

Happy carving,
Pres

Winter Challenge continues

Take a 2" x 2" block of any kind of wood and see what you can make with it.

Check out the examples below; and be prepared to share what you make at the next monthly meeting (*Zoom* for now).

You can email a picture to a club officer, or have it ready to share on-screen during the *Zoom* meeting.

